

## ▲ A7200M/CG30E

- 1Gbps Ethernet interface , max 100m transmission
- 128MB on-board frame buffer
- Support multiple image data formats
- Conform to CE, FCC, RoHS certifications
- Software trigger/Hardware trigger/Free run mode
- Compatible with GigE Vision V2.0 protocol and GenICam standard

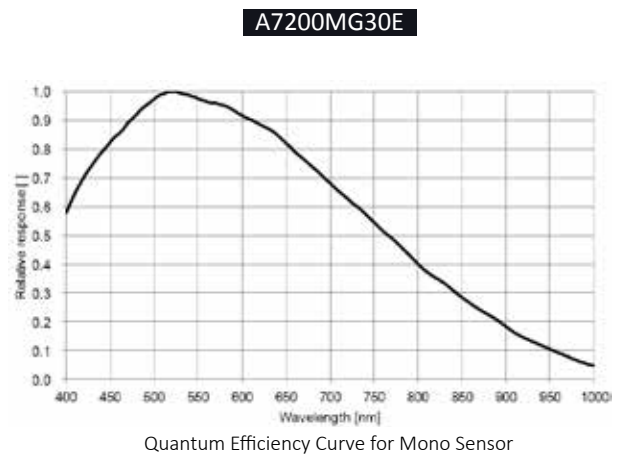
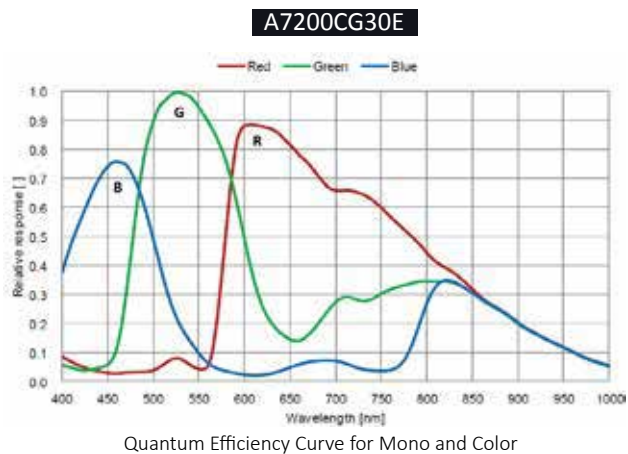


### Specification

Model	Sensor	Sensor type	Shutter	Resolution	Frame rate ( fps )	Bit depth	Interface	Mono/Color	Pixel size ( μ m )	Sensor size
A7200MG30E	IMX249	CMOS	Global	1920x1200	39	12	GigE, POE	Mono	5.86 x 5.86	1/1.2"
A7200CG30E	IMX249	CMOS	Global	1920x1200	39	12	GigE, POE	Color	5.86 x 5.86	1/1.2"

Model	A7200MG30E	A7200CG30E
Effective Pixels	2.3MP	
SNR	>38dB	
Dynamic Range	70dB	
GPIO	6 pin Hirose: 1 Opto-isolated input, 1 Opto-isolated output, 1 configurable input/output without opto isolation	
Image Format	Mono8/10/10Packed/12/12Packed	BayerGB8/10/10Packed, YUV422Packed Mono8, BayerRG8/10/10Packed
Binning	Support	--
ROI	Support	
Gain	X1~X32	
Gamma	Range from 0 to 4, support LUT	
Exposure Time	26μS~1S	
Trigger Mode	Software trigger/Hardware trigger/Free run mode	
Image Buffer	64MB	
User Setting	Support two sets of user-defined configurations	
Dimensions	29mmx29mmx42mm( not including lens mount and rear case connector)	
Weight	88g	
Power Supply	POE/DC power supply by Hirose connector, with voltage range from 6V to 26V	
Power Consumption	12V≈2.8W	
Lens Mount	C	
Temperature	Storage temperature: -30° C~ + 80° C; Operation temperature: -30° C~+50° C	

## Spectrogram



## Dimensions



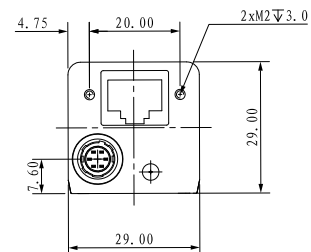
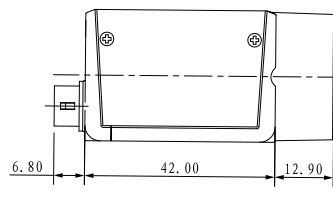
29.00



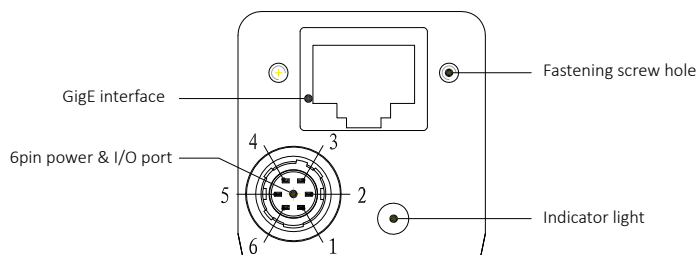
6.80 42.00 12.90



29.00



## IO Interface Instruction



Pin	Signal	Description
1	Power	DC 6V-26V input
2	Line1	Opto-isolated input
3	Line2	Configurable IO input/output
4	Line0	Opto-isolated output
5	IO GND	Opto-isolated ground
6	GND	Ground